



Homeward House Collaborative

The Homeward House Collaborative was created in response to the opioid epidemic in Snohomish County.

On average every month in 2017, 12 infants entered into the dependency system in Snohomish County - 98% due to substance/heroin use.

In Snohomish County, we are working with 2-3 generations of families impacted by addiction and dependency.

Source: Snohomish County Superior Court Denny Youth Justice Center, 2017
Source: Providence Hospital, 2017



Homeward House Collaborative

"Separating newborns in withdrawal can slow the infants' recovery and undermine an already fragile parenting relationship. When mothers are close at hand, infants in withdrawal require less medication and fewer costly days in intensive care."

- Dr. Debra L. Bogen, a professor of pediatrics at the University of Pittsburgh School of Medicine

This collaborative will pursue the identified outcomes based on the "Rooming-In" theory, with a wrap-around approach to services and supports, and using a non-judgmental, 2-3 Generational Approach.



Holmes, A.V., Atwood, E.C., Whalen, B., Beliveau, J., Jarvis, J.D., Matulis, J.C., Ralston, S.L. (2016) Rooming-In to Treat Neonatal Abstinence Syndrome: Improved Family-Centered Care at Lower Cost. *JAAP: Neon & Journal of Pediatrics*. 137 (6).
<https://www.nytimes.com/2017/07/13/health/guid-addiction-babies.html>



Homeward House Structure

- Homeward House Collaborative is funded by United Way of Snohomish County through their new 2-Generational (2-Gen) Collective Impact Model.
- United Way will provide \$210,000 each year for 3 years.
- Steering Committee composed of a United Way staff member, parent representative, one Lead Agency, five 2-Gen Domain Agencies:
 - Snohomish Health District – Health & Well-Being Primary
 - Interfaith Association of Northwest Washington – Economic Assets
 - Domestic Violence Services of Snohomish Co & Ann Brice, attny – Social Capital
 - ChildStrive – Early Childhood Care & Education
 - Housing Hope – Post-Secondary & Employment
- Other partners include:
Providence Medical Center - Evergreen Health - Swedish Edmonds Hospital - YWCA
Ideal Option - Girls Giving Back - Center for Human Needs - Sno Co Music Project
Bridgeways - Sherwood Community Services - Hand In Hand - Parents For Parents
PCAP - Cocoon House - Wonderland/Hope Rising Clinic and many more ...

Vision-Mission-Values

Mission:

Nurturing the vital parent-child bond in the face of crisis, treatment, and recovery.

Vision:

A resilient, flourishing community, where each family can provide a safe and loving home for their child.

Values:

Dignity, Equity, Collaboration, Family- Centered, Advocacy, Mentorship, Restorative



Who will Homeward House serve?

Homeward House program eligibility criteria:

- Child named in referral is aged 0 – 1
- Mother and child impacted by opiate abuse
- Family defined as low-income at or below 185% the Federal Poverty Line



Referral for Services

- Hospital Social Worker will introduce Homeward House Collaborative to new CPS- referred participant.
- Hospital Social Worker will provide Homeward House Collaborative information packet to prospective client.
- Hospital Social Worker calls Homeward House Coordinator after/if client provides consent and faxes referral form to Homeward House coordinator.
- Homeward House Coordinator informs Parent Ally Mentors of new referral immediately after is received.
- Homeward House Parent Ally calls client to arrange initial meeting with client.
- Parent Ally Mentor schedules appointment to coordinate support for 72 hr Shelter care hearing/ Intake paperwork and starts mentoring.
- Coordinator will fax- Domain Referral Form to the identified domain(s).



Services to be Provided

- Homeward House staff and Collaborative Partners will provide wrap-around services and support for parents and infants/children.
- Families will be connected to specialized services, including visitation enriched by mentoring and interactive parenting education.
- YWCA Parents For Parents Parent Ally Mentors will provide outreach and support at Superior/Juvenile Court to parents with infants experiencing addiction and with a dependency case. YWCA Dependency 101 and 201 Classes
- Parenting skills, drug & alcohol and psychological assessments will be available and scheduled upon entry and based on each individual's need and court ordered services.



Parents Ally Mentors

The YWCA Parents For Parents – (P4P) focus is to seek out and support families at court hearings and gather community resources and information to assist these families.

A Parent Ally Mentor is a parent that has successfully navigated the Child Welfare System/ Dependency Process and has been reunified with their children and is currently living a healthy life style.

Parent Ally Mentors will be providing mentorship based case management at Homeward House.



Dependency 101 Class

- The Dependency 101 class is a free 2 hour class offered to parents to learn about the Dependency Court System.
- The class is held monthly and facilitated by the Parent Ally Mentor Coordinator, at the Denny Juvenile Justice Center.

Court Appointed Social Worker, Defense Attorney, Assistant Attorney General, Court Appointed Special Advocate (CASA), Family Treatment Court, Judge (special occasions) and Parent Ally Mentor



Dependency 201

This is a series of classes to gain knowledge of community resources available to you that will help you develop a positive support network. The class is held at the YWCA weekly.

The class includes RISING together peer support group and topics covered are :

- Dependency Process
- Visitation
- Life Skills
- Childcare/Parenting
- Mentoring/ Goal Planning
- RISE- reflection activities
- Social Bio-workshops



Homeward House Goals

The ultimate goals for Homeward House are to:

- Successfully achieve a safe placement for both parent and infant while treating the effects of substance use disorder.
- Preserve the bond between parent and child coming into dependency due to substance use disorder.
- Achieve permanency

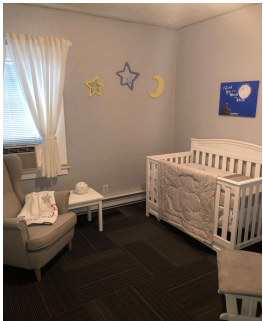
Within the next five years, Homeward House seeks to move from a visitation center with wrap-around services to a center that provides transitional/temporary housing, visitation and wrap-around services.



Homeward House



Homeward House



Homeward House



Homeward House



Homeward House



Homeward House



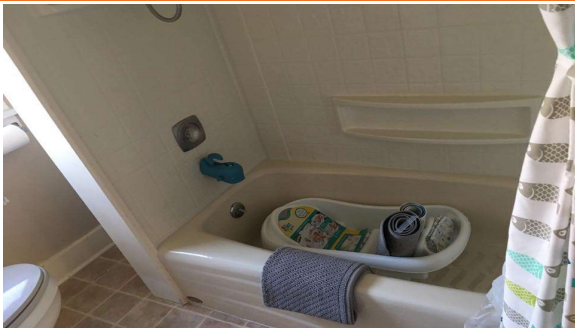
Homeward House



Homeward House



Homeward House



Homeward House



Homeward House Collaborative

Homeward House

3701 Broadway Everett, WA 98201

For more information about Homeward House contact:

Karen Kearney - Homeward House Coordinator

kkearney@ywcaworks.org

For more information about Parent Ally work in Snohomish County contact:

Kristina Jorgensen - Parents For Parents Program Coordinator.

kjorgensen@ywcaworks.org